



SECURITY PLUS-LINE  
ALSET-2000

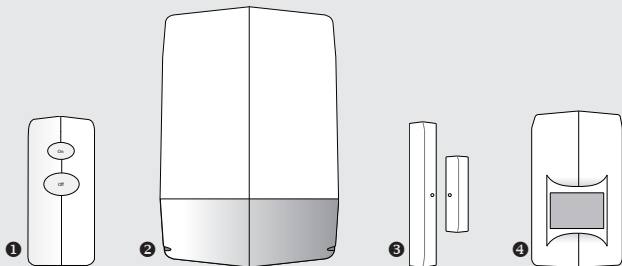
QUICK INSTALL GUIDE  
MULTI LANGUAGE



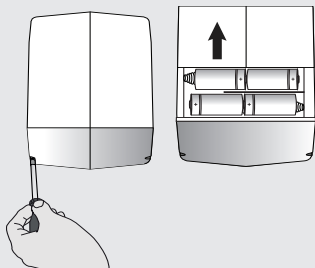
Item 71116 Version 1.0  
Visit [www.trust.com](http://www.trust.com)  
for the latest instructions

ALSET-2000 WIRELESS SECURITY SYSTEM

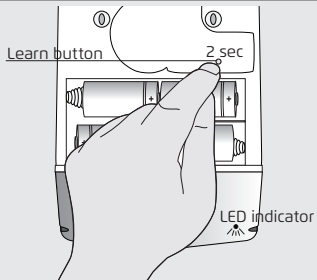
1



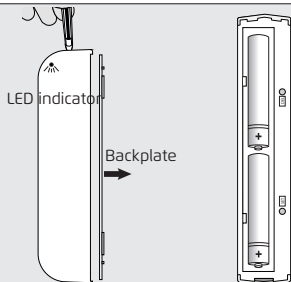
2



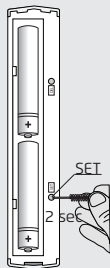
3



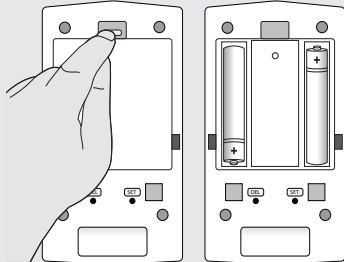
4



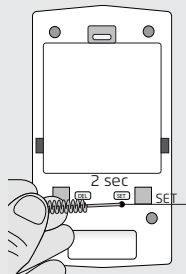
5



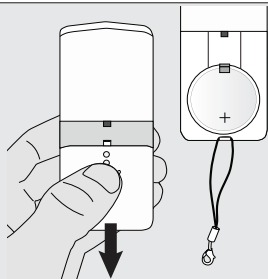
6



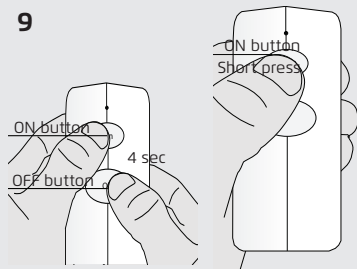
7



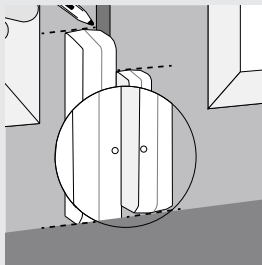
8



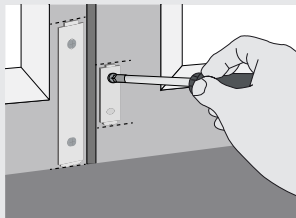
9



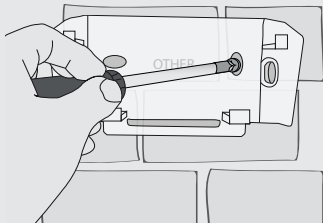
10



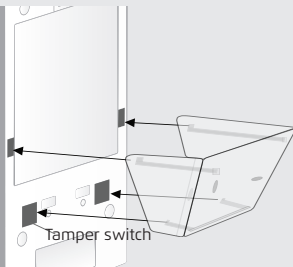
11



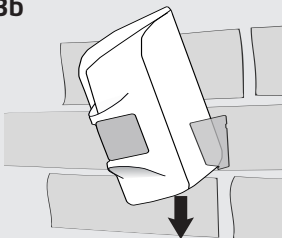
12



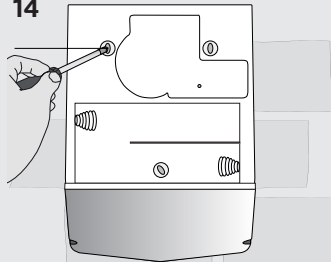
13a



13b

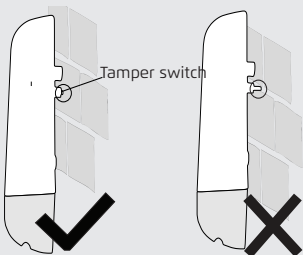


14

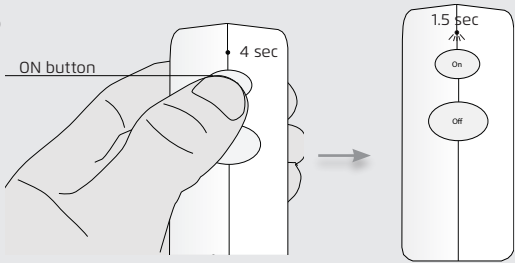


tamper switch

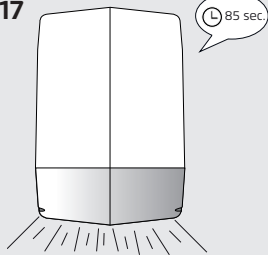
15



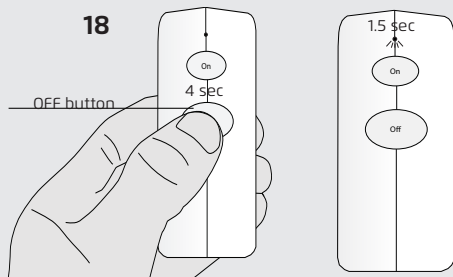
16



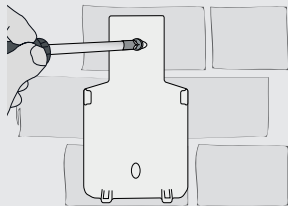
17



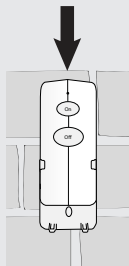
18



19



20



## 1. Package content

The following products are included:

- 1 ALKCT-2000 Remote control
- 2 ALSIR-2000 Siren
- 3 ALMST-2000 Magnetic contact sensor
- 4 ALMDT-2000 Infrared motion sensor

**i** NOTE: This is a quick installation guide, visit [www.trust.com/71116](http://www.trust.com/71116) for more in depth info of the individual products like:

- Specifications
- Mounting
- Reset/unpair
- Tamper switch
- LED indications

## 2. Open the ALSIR and place batteries

Open the siren by unscrewing the two screws beneath the light cap. When the screws are removed the cap of the siren can be slid open. When the cap of the siren is slid open place 4x Alkaline D type 1.5V battery in the siren (not included). Observe the correct polarity of the batteries.

## 3. Put the ALSIR in learn mode

Slide open the cap and press and hold the siren learn button for about 2 second to enter learn mode. The LED of the siren will be blinking (in the light cap). The learn mode lasts 15 seconds.

## 4. Open the ALMST and place batteries

Push with a sharp object on top of the magnetic sensor and pull off the backplate. Insert two 1,5V AAA Alkaline batteries in the slot (not included). Observe the correct polarity of the batteries (place plus and minus on the correct side)



### 5. Pair the ALMST to the ALSIR

Put the ALSIR in learn mode (see step 3). After putting the ALSIR in learn mode send a pair-signal by pressing the SET button with a sharp object next to the battery slot of the magnetic sensor. The LED indicator of the ALMST will flash 5x to confirm that the pairing has been done successfully.

### 6. Open the ALMDT and place batteries

Open the battery slot on the back side of the motion sensor by pushing the pull-tab down and removing the battery cover. Insert two AA 1,5V Alkaline batteries as shown above (not included). Observe the correct polarity of the batteries place plus and minus on the correct side. Close the battery slot.

### 7. Pair the ALMDT to the ALSIR

Put the ALSIR in learn mode (see step 3). After putting the ALSIR in learn mode send a pair-signal by pressing the SET button with a sharp object on the back of the sensor. The LED indicator of the ALMDT will flash 5x to confirm that the pairing has been done successfully.

### 8. Open the ALKCT and place battery

Open the battery slot at the back of the ALKCT by sliding it down. Place the included 3V CR2477 battery and close the battery slot. For more information on replacing and purchasing new batteries visit [trust.com/71115](http://trust.com/71115)

### 9. Pair the ALKCT to the ALSIR

1. Put the ALSIR in learn mode (see step 3). Put the ALKCT in pair-mode by first pressing the ON and OFF button simultaneously for 4 sec (until the LED of the ALKCT starts blinking).
2. Give a short press on the ON button to pair with the Siren. The LED indicator of the ALKCT will be flashing 5x to confirm that the pairing has been done successfully.

### **10. Mount ALMST**

Place the magnetic sensor on the window or door and make sure that both points on the two parts are in line with each other. Mark the top and bottom of both parts. After marking the positions remove the sensor.

### **11. Fasten the ALMST**

Screw or tape both backplates of the magnetic sensor on the window or door according to the made markings. When securing the backplates make sure both parts are mounted with as little space between as possible (max. 5mm). Place both parts of the magnetic sensor back on the mounted backplates.

**Note:** More detailed mounting instructions of the magnetic sensor are available at [trust.com/71113](http://trust.com/71113)

### **12. Mount ALMDT**

Mount the backplate of the motion sensor on a flat surface and secure it with screws. (Screws are included).

### **13a. Fasten the ALMDT**

Place the ALMDT on the backplate until you hear a click. Make sure that the backplate is fitted in the location of the tamper switch.

**Note:** More detailed mounting instructions of the motion sensor are available at [trust.com/71114](http://trust.com/71114)

### **13b. Secure the ALMDT**

When the ALMDT is placed on the backplate pull it down until you hear a click to secure it and lock the tamper switch.

**Note:** After arming the Siren it is possible to move in front of the sensor for 1 min. It takes ~1.5 minute before the sensor will be completely active.

### **14. Mount ALSIR**

To fasten the siren slide the cap off (see step 2) remove the batteries and screw the casing with screws on a flat surface according to the screwholes. (Screws are included). Keep attention that the tamper switch is pressed to the surface after mounting the siren.

### 15. ALSIR placement

When placing the siren on a wall keep attention that the tamper switch isn't placed on a groove or crack in the wall. Make sure that the tamper switch is placed on a location of the wall where it is firmly pressed.

**Note:** More detailed mounting instructions of the siren are available at [trust.com/71112](http://trust.com/71112)

### 16. Arm/Turn on the siren

To arm the siren press the ON button for 4 seconds on the ALKCT.

If the siren is armed successfully the LED of the ALKCT will light up for 1.5 sec.

### 17. Walk-out time

When the Siren is armed there is a 85 sec walk-out time. Within these 85 sec the system checks all the sensors if they are responding and it is possible to leave the building without triggering the alarm. When there already is a window or door open at the beginning of this walk- out time the alarm will go off for 20 sec reminding that one of the doors or windows isn't closed. After the window or door sensor is closed the alarm will stop and continue in armed mode.

### 18. Disarm/Turn off the siren

To disarm the Siren press the OFF button for 4 seconds on the ALKCT.

If the Siren is disarmed successfully the LED of the ALKCT will light up for 1.5 sec.

### 19. Mounting the ALKCT holder

Mount the holder of the ALKCT on a flat surface and secure it with screws. (Mounting screws not included)

### 20. Place ALKCT in holder

When the holder has been mounted and secured with screws place the ALKCT in the holder. To place the ALKCT slide it in from top to bottom.



SECURITY PLUS-LINE  
ALSET-2000

IMPORTANT INFORMATION  
MULTI LANGUAGE



Item 71116 Version 1.0  
Visit [www.trust.com](http://www.trust.com)  
for the latest instructions

ALSET-2000 WIRELESS SECURITY SYSTEM

## **EN** ALSET-2000 WIRELESS SECURITY SYSTEM

---

Read the manual carefully. Failure to follow these instructions can be dangerous. Incorrect installation will void any warranty on these products.

### **COMPATIBILITY**

The security set works with the ALSIR-2000, ALMST-2000, ALMDT-2000 and ALKCT-2000.

### **FUNCTIONALITY**

Wireless security set for alarming the user and their neighbours when a sensor is triggered.

### **SMARTPHONE/TABLET FUNCTIONS**

By combining these products with the OCTOPUS Control station, you can also set your alarm on / off via your tablet and / or smartphone and receive push notifications when you are not at home.

For more information visit [trust.com/71110](http://trust.com/71110)

### **WIRELESS RADIO SIGNAL**

- The 868 MHz signal passes through walls, windows and doors.
- Range up to 120 m (under optimal conditions).
- The strength depends on local conditions, such as the presence of metals. The metal particles in for example, double glazing (HR glass), can provide a reduction in the range of wireless signals.
- There may be restrictions on the use of these devices outside the EU. Check, if applicable, whether this device meets local regulations.

### **Legal information**

CE: Trust declares this device complies with the Directives as listed in Section 2 of this document.

WEEE: Dispose of the device at a recycling centre. More information: [www.trust.com](http://www.trust.com)

Warranty information: [www.trust.com/warranty](http://www.trust.com/warranty)

**BATTERY**

Remove the battery from the devices if these are not used for a long time. Extreme temperatures reduce the capacity and lifetime of the battery.

Batteries should not be chopped into pieces or burned. Dispose of batteries according to local regulations. Deliver them for the possibility to reuse. Do not throw batteries away with the normal household waste.

**LIFE SUPPORT**

Never use Trust SmartHome products for life support systems or other applications where failures can have life-threatening consequences.

**INTERFERENCE**

Interference can affect the operation of all broadcast transmitter and receivers negatively. The distance between 2 receivers or transmitters should be at least 50 cm.

**REPAIRS**

Do not try to repair these products yourself.  
The devices contain no serviceable parts for the user.

**WATER-RESISTANT**

Within this set only the siren is water-resistant (IP44) and can be placed indoor and outdoors.  
The other products can only be placed indoors.

**CLEANING**

Clean these products with a dry cloth.  
Do not use harsh chemicals, cleaning solvents or strong detergents.

**HANDLING**

Do not drop the devices, bump the devices against something or shake them. Rough handling can damage internal circuit boards and fine mechanics.

**ENVIRONMENT**

The products should not be exposed to extreme heat or cold. This can damage the circuit boards and batteries or shorten its life.

**DISCLAIMER**

These products are a basic deterrent against intruders. However, it remains the responsibility of the end-user to adequately protect their home against break-ins. Therefore Trust cannot be held responsible or liable for any damages resulting from break-ins, trespassing, unauthorized access or vandalism.

**CE** Declaration of conformity

Trust International B.V. declares that the TRUST SMARTHOME-product:

model: ALSET-2000  
item number: 71116  
intended use: Indoor/Outdoor

is in compliance with the essential requirements and other relevant provisions of the following directives: EMC Directive (2014/30/EU), Low Voltage Directive (2014/35/EU), ROHS Directive (2011/65/EC), R&TE Directive (1999/5/EC). The product is compatible with the following norms/standards:

EN 300-220-1 V2.4.1 (2012)  
EN 300-220-2 V2.4.2 (2012)  
EN 301489-1 V1.9.2 (2011)  
EN 301489-3 V1.6.1 (2013)  
EN 60950-1: 2006+A11: 2009+A1 2010+A12:  
2011+A2 2013

EN 55014-1 : 2006+A1 : 2009+A2: 2011  
EN 55014-2: 1997+A1: 2001 +A2: 2008  
EN 50581: 2012

Manufacturer/Authorised representative,



H. Donker, Procurement Director

Dordrecht, April 28 2016

**Trust International B.V.**  
LAAN VAN BARCELONA 600  
3317DD DORDRECHT  
NETHERLANDS



People • Technology • Solutions

HEAD OFFICE : AUCKLAND Tel : (09) 579 1990  
WELLINGTON : Tel : (04) 499 3591 CHRISTCHURCH : Tel : (03) 366 0017  
Email : sales@eurotec.co.nz WEBSITE : www.eurotec.co.nz

**HVAC • Refrigeration • Electrical • Measurement**