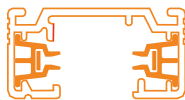


# Single Circuit Standard Output Track Spot

S214



**670**  
LUMENS

**10**  
WATTS

**SINGLE**  
CIRCUIT

## SPECIFICATIONS

|                     |   |
|---------------------|---|
| <b>DIMENSIONS</b>   | Spot Diameter / Length: D60mm x L117mm<br>Base Height / Length: H19mm x L80mm |
| <b>COLOUR TEMP</b>  | 3000K Warm White  |
| <b>LUMENS</b>       | 670lm   |
| <b>CRI</b>          | 90+   |
| <b>LIFESPAN</b>     | 50,000 Hours (L70)  |
| <b>BEAM ANGLE</b>   | 38°   |
| <b>TILT ANGLE</b>   | 90°   |
| <b>ROTATE ANGLE</b> | 355°  |
| <b>MATERIAL</b>     | Aluminium & PC  |
| <b>DRIVER</b>       | Dimmable driver incorporated  |
| <b>APPLICATION</b>  | Interior residential or commercial  |
| <b>WARRANTY</b>     | 5 Year Warranty   |

## AVAILABLE IN

| DESCRIPTION | CODE     |
|-------------|----------|
| White 3000K | S214 W3K |
| Black 3000K | S214 B3K |

## ACCESSORIES

| DESCRIPTION | CODE      |
|-------------|-----------|
| 24° Lens    | S200 L241 |
| Honeycomb   | S200 HC1  |

See pages 194 - 199 for Single Circuit Track Lengths and Single Circuit Track accessories.

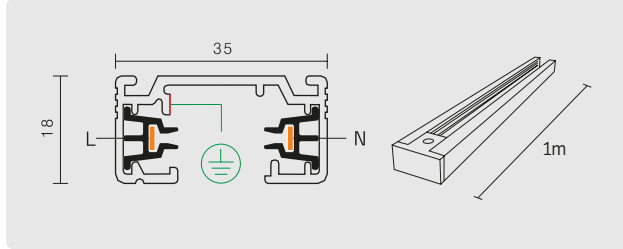




**1M TRACK LENGTH**

AC 240V  
16A

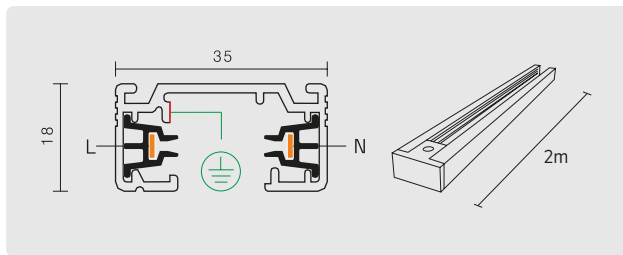
|  |               |
|--|---------------|
|  | <b>T510 W</b> |
|  | <b>T510 S</b> |
|  | <b>T510 B</b> |



**2M TRACK LENGTH**

AC 240V  
16A

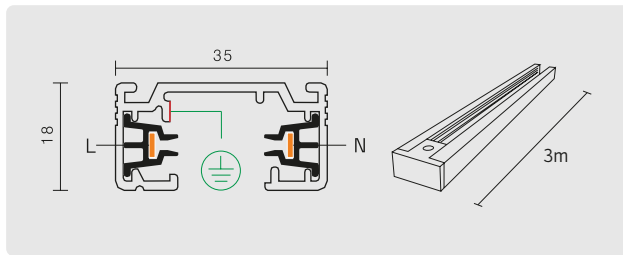
|  |               |
|--|---------------|
|  | <b>T520 W</b> |
|  | <b>T520 S</b> |
|  | <b>T520 B</b> |



**3M TRACK LENGTH**

AC 240V  
16A

|  |               |
|--|---------------|
|  | <b>T530 W</b> |
|  | <b>T530 S</b> |
|  | <b>T530 B</b> |

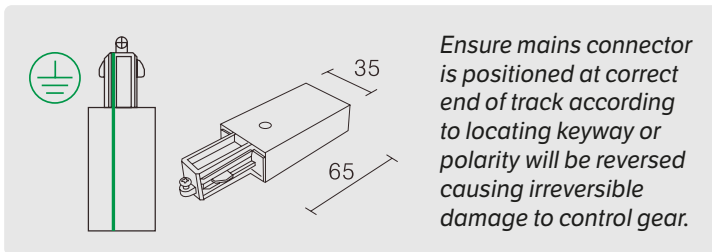


*Single Circuit Track lengths are supplied with pre-installed end Mains Connection (Earth Left) and End caps unless specified otherwise.*



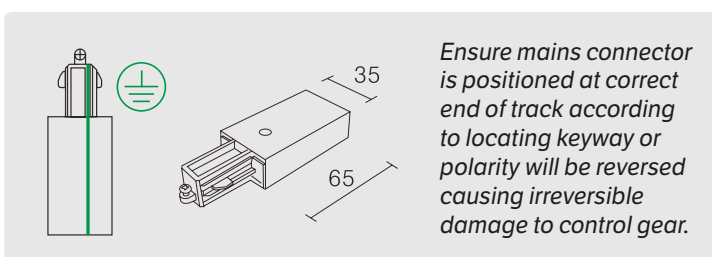
**MAINS CONNECTION  
EARTH LEFT**  
AC 240V  
16A

- T540 MLW**
- T540 MLS**
- T540 MLB**



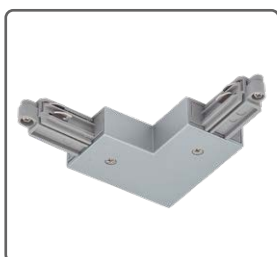
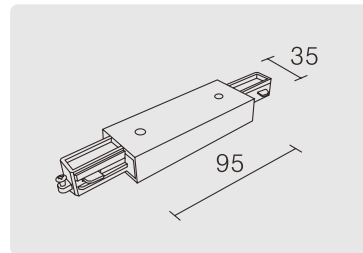
**MAINS CONNECTION  
EARTH RIGHT**  
AC 240V  
16A

- T540 MRW**
- T540 MRS**
- T540 MRB**



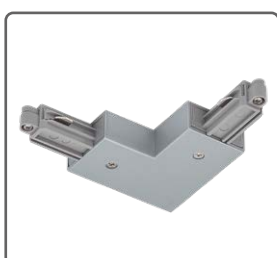
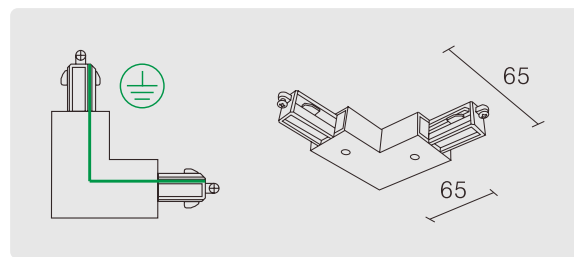
**CENTRE MAINS  
CONNECTION**  
AC 240V  
16A

- T548 CW**
- T548 CS**
- T548 CB**



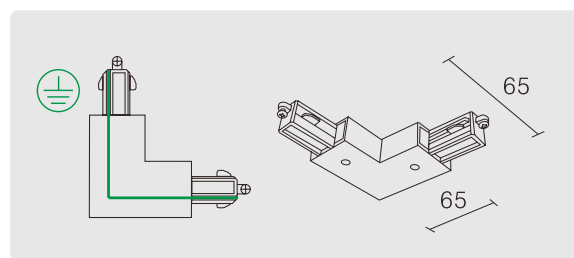
**"L" JOIN  
EARTH INSIDE**  
AC 240V  
16A

- T543 LIW**
- T543 LIS**
- T543 LIB**



**"L" JOIN  
EARTH OUTSIDE**  
AC 240V  
16A

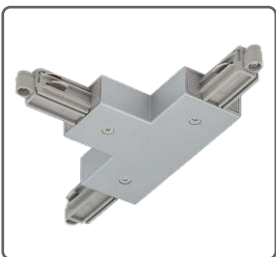
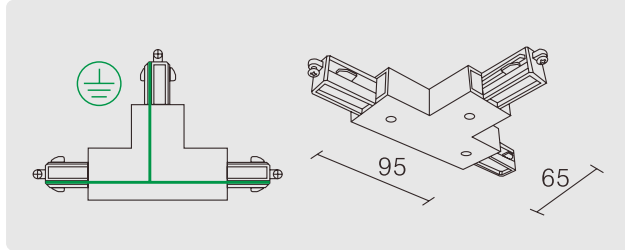
- T543 LOW**
- T543 LOS**
- T543 LOB**





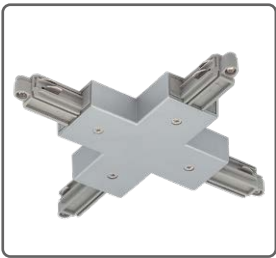
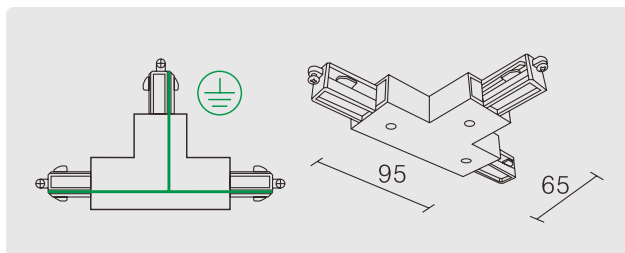
**"T" JOIN  
EARTH LEFT**  
AC 240V  
16A

- T544 TLW**
- T544 TLS**
- T544 TLB**



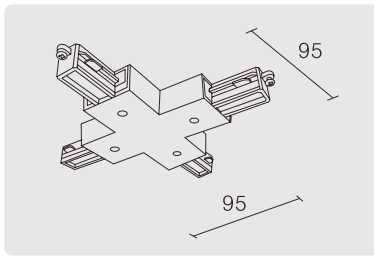
**"T" JOIN  
EARTH RIGHT**  
AC 240V  
16A

- T544 TRW**
- T544 TRB**



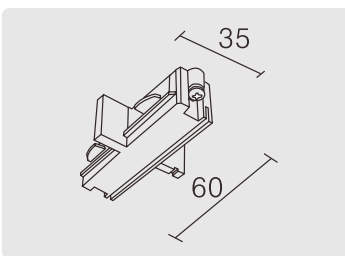
**4 WAY JOIN**  
AC 240V  
16A

- T545 XW**
- T545 XS**
- T545 XB**



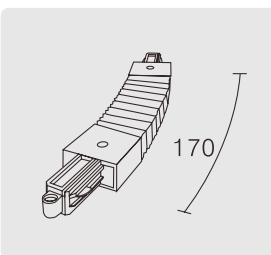
**STANDARD JOIN  
STRAIGHT**  
AC 240V  
16A

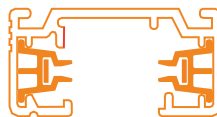
- T542 JW**
- T542 JS**
- T542 JB**



**FLEXIBLE JOINT**  
AC 240V  
16A

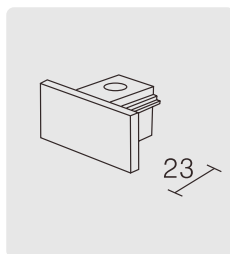
- T546 FW**
- T546 FS**
- T546 FB**





**TRACK END CAP**  
*Plastic*

- T541 EW**
- T541 ES**
- T541 EB**



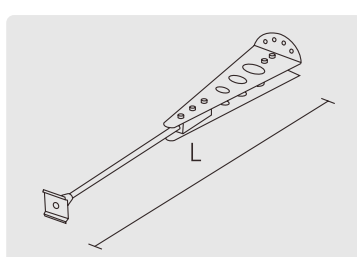
**1 CIRCUIT MAINS ADAPTOR WITH CORD GRIP**

- T552 TAW**
- T552 TAS**
- T552 TAB**



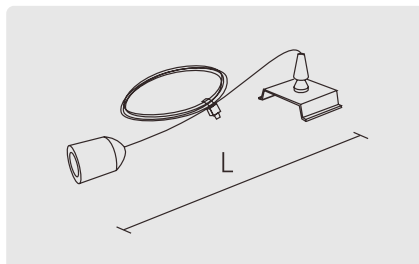
**SUSPENSION ROD**  
**0.2 - 1m**  
*Max Load 200nm*

- T549 RW**
- T549 RS**
- T549 RB**



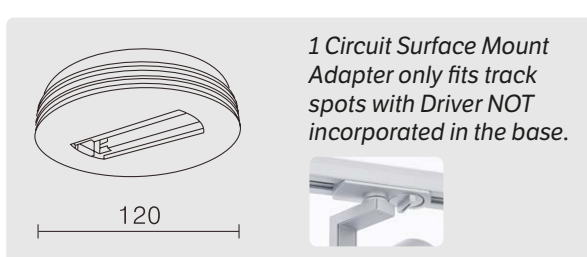
**SUSPENSION CABLE**  
**3M**  
*Max Load 100nm*

- T547 SW**
- T547 SS**
- T547 SB**



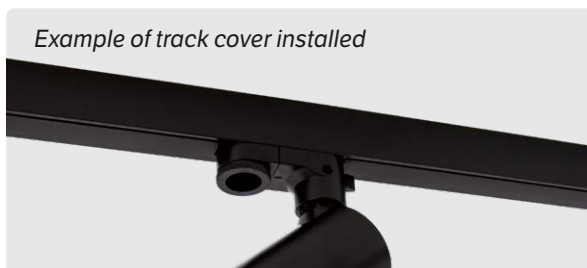
**SURFACE MOUNT ADAPTER**  
*Diameter 120mm*

- T249 CMW**
- T249 CMS**
- T249 CMB**



**TRACK COVER**  
*Available in Black*  
*2m lengths only.*  
*Custom cut to suit installation.*

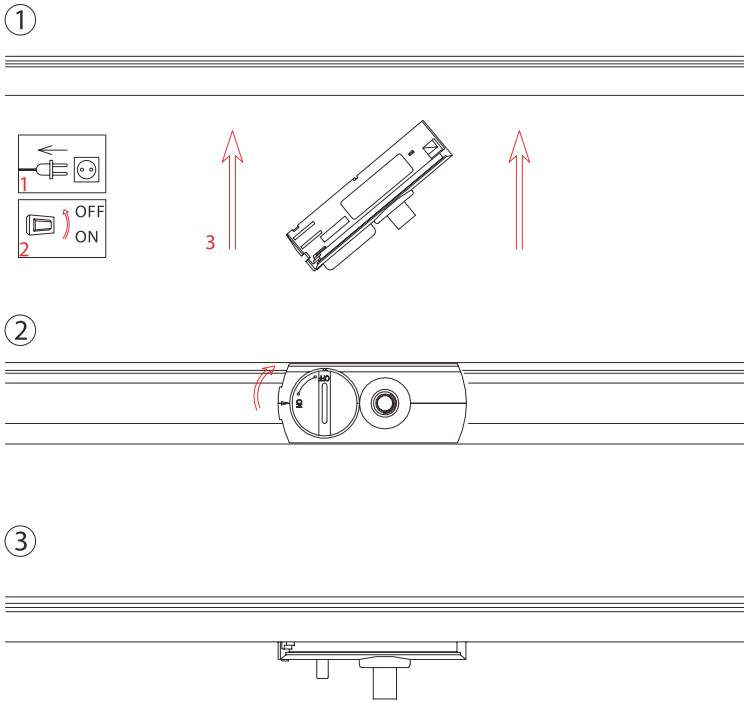
- T100 TCB**



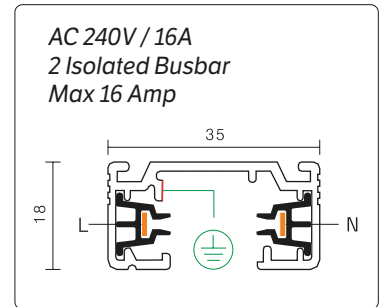
*Example of track cover installed*



**SINGLE CIRCUIT ADAPTER SECURING**



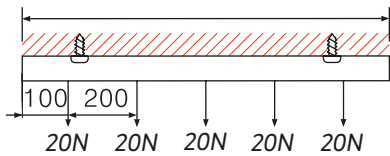
**ELECTRICAL PARAMETERS**



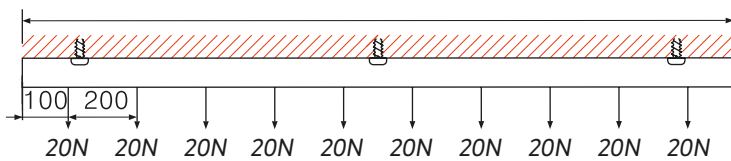
**TRACK SECURING / LOADING**

*Installation Note: See screw locations on diagrams below for recommended spacing of fixing/suspension points. Halcyon recommends suspension/fixing approximately every 600-1000mm. Track lengths come complete with pre-drilled fixing points but are easily custom drilled to suit any installation.*

**1m Track Lengths**



**2m Track Lengths**



**3m Track Lengths**

