

**warmup**<sup>®</sup>

Est. 1994

Underfloor heating | Tiled shower solutions



**THE BEST-SELLING  
UNDERFLOOR HEATING  
BRAND IN THE WORLD**



## WHO WE ARE

Since launching in New Zealand in 1994, we have warmed over 90,000 homes and sold more than 200,000 thermostats.

Warmup is committed to using the latest technology and the finest components in the production and installation of its heating. With a strong focus on technology, Warmup constantly strives to excel in innovation which offers a new dimension in comfort.

## WHY UNDERFLOOR HEATING?

Unlike alternative heating, it requires less energy to run and maintains a stable, clean, silent and comfortable source of 'thermal heat' that will not dry out the air or aggravate allergies. This rising heat source is not just environmentally friendly, but also very cost-effective to run.

- You can feel the difference within 30-60min after switching it on
- Our heaters are approved and certified to New Zealand and Australian standards
- Designed for flexibility, temperature performance, safety and longevity
- No visible elements or radiators thus making it safe with children in the house
- Thermostats allow controlled heating where and when you need it
- Warranties on product and installation

# INDEX

Undercarpet Heating....	04
Undertile Heating....	06
Inslab Heating....	08
Laminate Heating....	10
Product Reference Guide....	11
Thermostats....	12
Tiled Shower Solutions....	14
Insulation Boards....	16
Moderno Outdoor Heaters....	18





**5 YEAR**  
WARRANTY  
T's & C's apply

## Undercarpet Heating

Undercarpet heating warms the floor surface where you need it. Since every room in your home has a different heating requirement, Warmup undercarpet heaters are individually controlled, giving you a cost-effective heating system. Our heating elements and thermostats are approved and certified to New Zealand and Australian standards.

Radiant heat is recommended by health professionals, especially for asthma sufferers.

The wafer-thin heating element fits between the carpet and underlay and comes in several shapes and sizes designed to fit virtually every room.

Warmup undercarpet heaters are a result of more than two decades of advanced research and development.

Warmup now offers you a new dimension in affordable, luxurious, effective heating which is simple to operate and maintenance-free. Simply set your thermostat to the desired comfort level and feel the luxurious warmth



### Features

- User friendly – Ease of laying and connection, temperature control through programmable thermostats.
- Comfort – Uniform heating and thermostat control provides an ultimate Warmup experience.
- Environmentally friendly – These mats consist of metals, primarily aluminium, now considered a green metal. It does not emit any greenhouse gases while heating.

### Running Costs

Medium Bedroom	5m <sup>2</sup> - 7m <sup>2</sup>	\$0.26/kwatt/hr	6 hours per day	= \$1.58 / day
----------------	-----------------------------------	-----------------	-----------------	----------------

NOTE

Every 1°C reduction in the temperature setting of your thermostat will result in a 5% – 8% reduction in power usage and cost over 24 hours.

The calculation of running costs can only be approximate. The actual cost will depend on several considerations – user preferences, temperature and switch-on time setpoints, cost of energy etc.

## Technical Information

The Warmup Foil is an ultra-thin electric radiant floor heating system primarily for use with undercarpet and laminate.

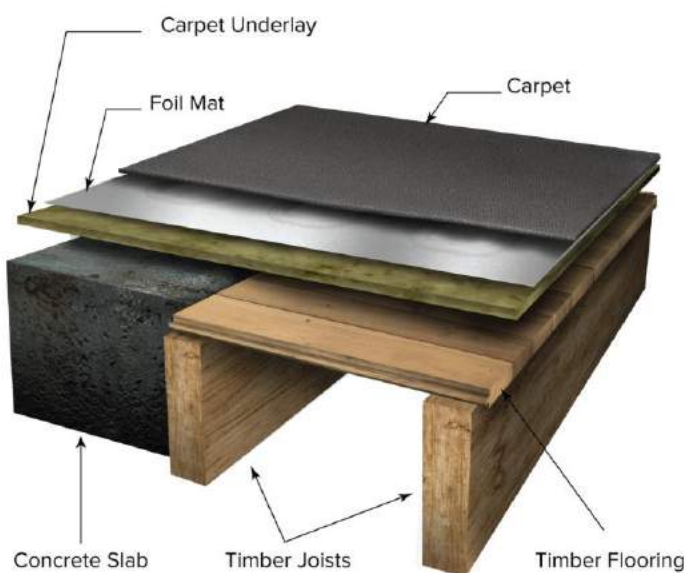
It is constructed using dual core fluoropolymer insulated heating cables. The heating cables are sandwiched between two layers of specially reinforced aluminium foil acting as the additional earth. The aluminium foil along with the uniform spacing of the heating elements ensures even heat distribution.

The heating elements are connected to the power supply cable, which exits the mat from one corner. The power lead is a flat thin two core flexible cord, consisting of two insulated conductors covered by a metallic earth braid and an outer sheath.

Warmup Foil heating mats are available at a nominal heat output of 140W/sqm @ 230 V. The mats are available in predetermined lengths with a 10m cold tail. The Warmup Foil heating mats are manufactured & tested in a carefully controlled factory environment.

The heating mats are intended to be installed between the underlayment and the laminate/carpet floor and are for indoor applications only. Although they are completely watertight and grounded, all installation and wiring instructions MUST be followed. These FOIL heating mats are NOT suitable for undertile, stone, or nailed/glued hardwoods.

### Warmup Undercarpet Heating Installed on a Timber or Concrete Floor



#### Sizing Guide

MODEL	SIZE (L x W)	AREA	WATTS
W2140	2.0m x 0.5m	1.0m <sup>2</sup>	140
W2280	4.0m x 0.5m	2.0m <sup>2</sup>	280
W2490	7.0m x 0.5m	3.5m <sup>2</sup>	490
W2700	10.0m x 0.5m	5.0m <sup>2</sup>	700
W2980	14.0m x 0.5m	7.0m <sup>2</sup>	980
W21260	18.0m x 0.5m	9.0m <sup>2</sup>	1260
W21540	22.0m x 0.5m	11.0m <sup>2</sup>	1540
W21960	28.0m x 0.5m	14.0m <sup>2</sup>	1960

#### Specifications

Standard wattage	140W/sqm at 230V
Width of the mat	0.5m
Heating cable spacing	centre to centre distance of 50mm
Cold Lead	10.0mm



## Undertile Heating

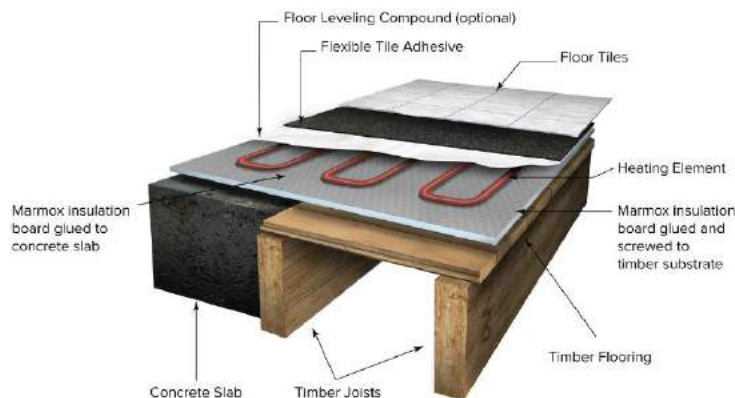
Ceramic, porcelain, terracotta, stone, slate, marble or wood - undertile heating makes your tiled floor feel as great as it looks. In fact it enhances the appearance of the whole room, because there is no ugly hardware in sight. The heat from an undertile heating wire transfers to the floor surface quickly, warming the floor surface where you require it. If it wasn't for the lovely warm feeling in the room, you would never know it had been fitted.

Radiant heat is recommended by health professionals, especially for asthma sufferers.

Warmup's undertile heating system is a result of more than two decades of advanced research and development. Warmup brings you a new dimension in affordable, luxurious, effective heating which is simple to operate and maintenance-free.

Simply set your thermostat to the desired comfort level and feel the luxurious warmth.

To ensure optimal heat retention, consider installing with Marmox insulation boards – enquire with our sales team.



Undertile Heating with Marmox Insulation Board Installed on a Timber/Concrete Floor

## Running Costs

Medium Bathroom	3m <sup>2</sup> - 4m <sup>2</sup>	\$0.26/kwatt/hr	4 hours per day	= \$0.53 / day
-----------------	-----------------------------------	-----------------	-----------------	----------------

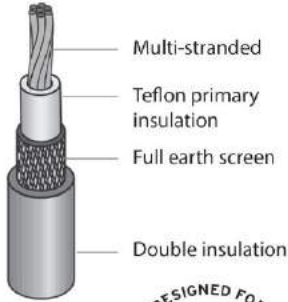
NOTE

Every 1°C reduction in the temperature setting of your thermostat will result in a 5% – 8% reduction in power usage and cost over 24 hours.

The calculation of running costs can only be approximate. The actual cost will depend on several considerations – user preferences, temperature and switch-on time setpoints, cost of energy etc.

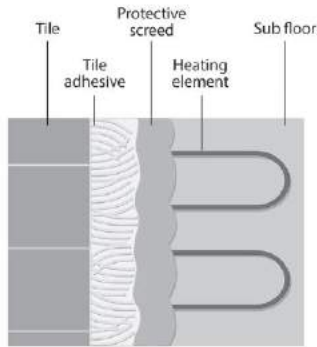
# Technical Information

## WIRE CROSS-SECTION

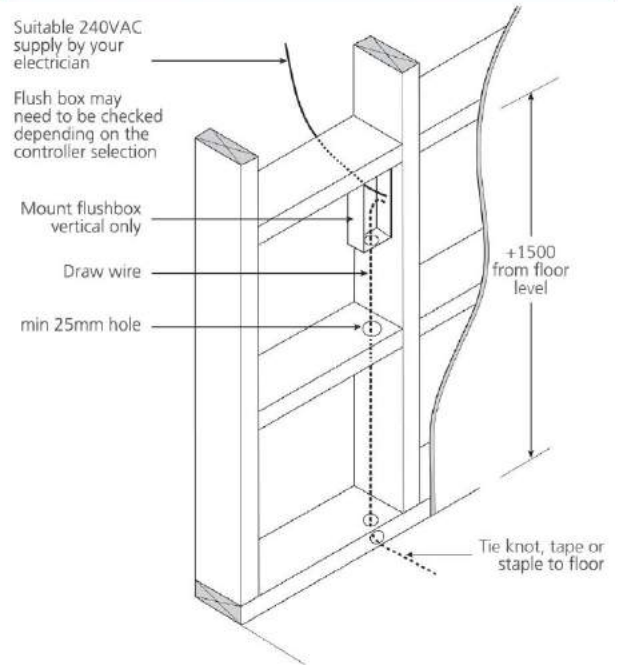


DESIGNED FOR  
WET AREAS

## INSTALLATION DIAGRAM



## CROSS-SECTION OF PRE-WIRE REQUIREMENTS



## Easy to install DIY kits

For Home-owners or trade professionals, Warmup offers undertile heating in easy-to-install DIY kits with full, comprehensive installation instructions included.

### Kit contains

- Undertile heating element
- Adhesive spray
- UT tape
- Watchdog continuity alarm
- Installation manual

Undertile kits are sold at participating retailers, so visit our website [www.warmup.co.nz](http://www.warmup.co.nz) for more information.



## Sizing Guide

CODE	COVERAGE AREA	WATTS
W1202	0.5m <sup>2</sup> - 1.0m <sup>2</sup>	200
W1302	1.0m <sup>2</sup> - 2.2m <sup>2</sup>	300
W1402	2.3m <sup>2</sup> - 3.0m <sup>2</sup>	400
W1502	3.0m <sup>2</sup> - 4.0m <sup>2</sup>	500
W1652	4.0m <sup>2</sup> - 5.0m <sup>2</sup>	650
W1802	5.0m <sup>2</sup> - 6.0m <sup>2</sup>	800
W11002	6.0m <sup>2</sup> - 7.5m <sup>2</sup>	1000

CODE	COVERAGE AREA	WATTS
W11252	7.5m <sup>2</sup> - 9.0m <sup>2</sup>	1250
W11502	9.0m <sup>2</sup> - 11.0m <sup>2</sup>	1500
W11802	11.0m <sup>2</sup> - 13.5m <sup>2</sup>	1800
W12002	13.5m <sup>2</sup> - 16.0m <sup>2</sup>	2000
W12502	16.0m <sup>2</sup> - 20.0m <sup>2</sup>	2500
W13002	20.0m <sup>2</sup> - 24.0m <sup>2</sup>	3000



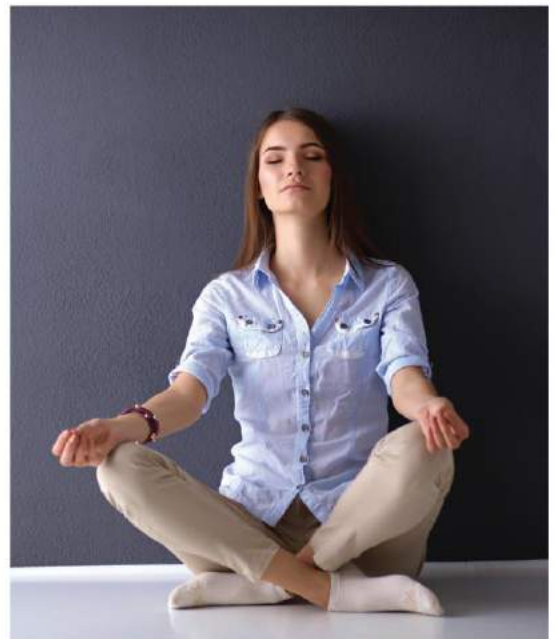
**10 YEAR**  
WARRANTY  
t's & c's apply

## Inslab Heating

The Inslab heating system is a popular, low-cost solution to heating polished or coloured concrete floors. It is designed to provide gentle background warmth in areas where heat is required for long periods

The inslab heating cables are embedded in your concrete slab, which is normally 20-60mm thick and provides a ready surface for any kind of floor covering, particularly where the flooring (wood, carpet, vinyl) may be replaced from time to time.

The slower heat-up time and cool-down time of the inslab cable makes it particularly suitable for rooms which are in constant use. Effective installation and correct operation and control will ensure maximum cost-effectiveness. Inslab heating can be installed in selected rooms, all of which allow individual control. Best of all, this clean, silent and odour-free heating solution will not dry out the air or aggravate allergies.



## Running Costs

Kitchen	8m <sup>2</sup> - 9m <sup>2</sup>	\$0.26/kwatt/hr	6 hours per day	= \$2.03 / day
---------	-----------------------------------	-----------------	-----------------	----------------

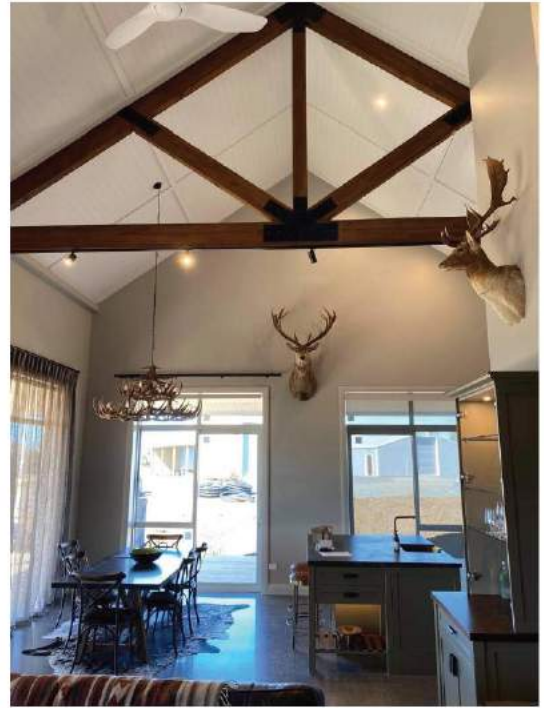
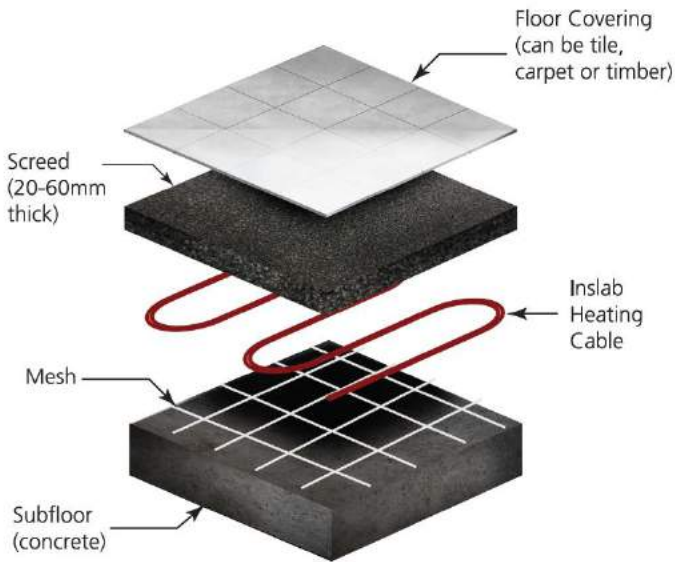
NOTE

Every 1°C reduction in the temperature setting of your thermostat will result in a 5% – 8% reduction in power usage and cost over 24 hours.

The calculation of running costs can only be approximate. The actual cost will depend on several considerations – user preferences, temperature and switch-on time setpoints, cost of energy etc.



# Technical Information



## Floor Covering (tiles, carpet or timber)

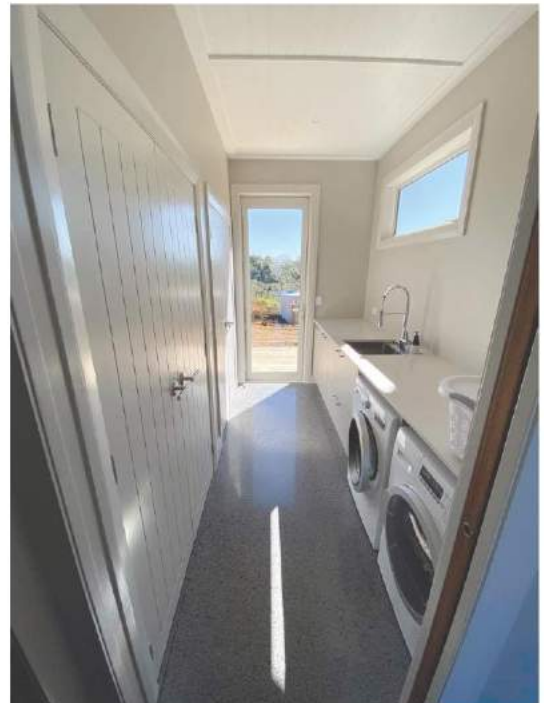
Any floor covering can be applied to the concrete surface, or it can be polished or left bare for a modern, industrial finish.

## Concrete

The concrete covering is approximately 20-60mm thick, effectively burying the heater.

## Heating Cables

Our in-slab heating cables are factory tested at 5000 volts, to ensure safety and longevity. The in-slab heating cable is installed after the re-inforcing mesh has been added and prior to the concrete being poured.



## Sizing Guide

CODE	LENGTH	WATTS
W4500	17.0m	500
W4750	25.0m	750
W41050	35.0m	1050
W41300	43.0m	1300
W41600	53.0m	1600

CODE	LENGTH	WATTS
W41920	64.0m	1920
W42580	86.0m	2580
W43060	102.0m	3060
W44000	133.0m	4000
W45000	166.0m	5000



**5 YEAR WARRANTY**  
t's & c's apply

## Laminate Heating

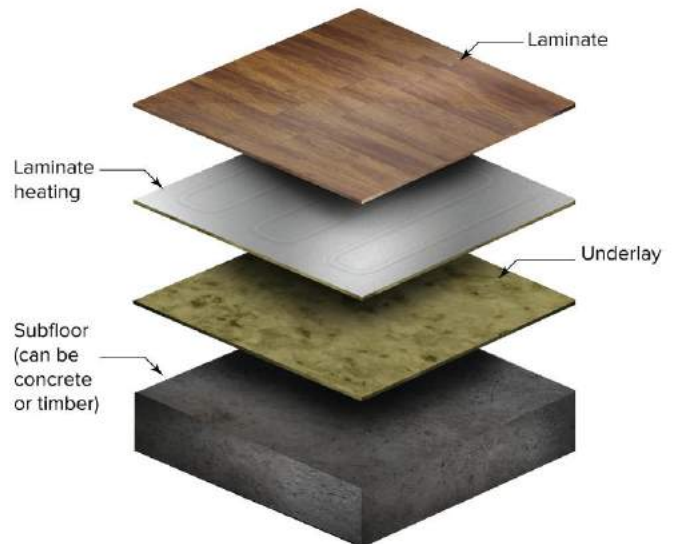
Floor heating for wooden floor finishes is increasingly popular amongst homeowners as it creates a warm and cosy ambience in a room. Whether you are installing engineered wood flooring or natural wooden floorboards, Warmup's electric floor heating system can be used with wooden floor finishes.

Our heaters are foil based or free form cable ensuring even heat distribution throughout the room.

### Features

- Flexible, highly durable material designed to withstand the weight of heavy furniture if installed correctly.
- Floor sensors work in conjunction with an intelligent Warmup thermostat, ensuring that the temperature never exceeds 27°C\* under the laminate.
- Heating is effective within 2-6 hours of switch-on.
- Has no protruding cables or hardware for prying little fingers, making it child and pet friendly.
- 100% waterproof.

*\* as recommended by wood manufacturers*



### Running Costs

Lounge	5m <sup>2</sup> - 6m <sup>2</sup>	\$0.26/kwatt/hr	6 hours per day	= \$1.29 / day
--------	-----------------------------------	-----------------	-----------------	----------------

NOTE

Every 1°C reduction in the temperature setting of your thermostat will result in a 5% – 8% reduction in power usage and cost over 24 hours.

The calculation of running costs can only be approximate. The actual cost will depend on several considerations –user preferences, temperature and switch-on time setpoints, cost of energy etc.

# Product Reference Guide

## Undercarpet

MODEL	SIZE (L x W)	AREA	WATTS
W2140	2.0m x 0.5m	1.0m <sup>2</sup>	140
W2280	4.0m x 0.5m	2.0m <sup>2</sup>	280
W2490	7.0m x 0.5m	3.5m <sup>2</sup>	490
W2700	10.0m x 0.5m	5.0m <sup>2</sup>	700
W2980	14.0m x 0.5m	7.0m <sup>2</sup>	980
W21260	18.0m x 0.5m	9.0m <sup>2</sup>	1260
W21540	22.0m x 0.5m	11.0m <sup>2</sup>	1540
W21960	28.0m x 0.5m	14.0m <sup>2</sup>	1960

## Specifications

Standard wattage	140W/sqm at 230V
Width of the mat	0.5m
Heating cable spacing	centre to centre distance of 50mm
Cold Lead	

## Undertile DIY Kit

MODEL	LENGTH*	AREA	WATTS
W1202	16.5m	0.5m <sup>2</sup> - 1.0m <sup>2</sup>	200
W1302	25.0m	1.0m <sup>2</sup> - 2.2m <sup>2</sup>	300
W1402	33.5m	2.3m <sup>2</sup> - 3.0m <sup>2</sup>	400
W1502	41.5m	3.0m <sup>2</sup> - 4.0m <sup>2</sup>	500
W1652	54.0m	4.0m <sup>2</sup> - 5.0m <sup>2</sup>	650
W1802	66.5m	5.0m <sup>2</sup> - 6.0m <sup>2</sup>	800
W11002	83.5m	6.0m <sup>2</sup> - 7.5m <sup>2</sup>	1000

MODEL	LENGTH*	AREA	WATTS
W11252	105.0m	7.5m <sup>2</sup> - 9.0m <sup>2</sup>	1250
W11502	125.0m	9.0m <sup>2</sup> - 11.0m <sup>2</sup>	1500
W11802	150.0m	11.0m <sup>2</sup> - 13.5m <sup>2</sup>	1800
W12002	166.5m	13.5m <sup>2</sup> - 16.0m <sup>2</sup>	2000
W12502	208.5m	16.0m <sup>2</sup> - 20.0m <sup>2</sup>	2500
W13002	250.0m	20.0m <sup>2</sup> - 24.0m <sup>2</sup>	3000

\* Length of the undertile heating element

### Kit contains

- Undertile heating element
- Adhesive spray
- UT tape
- Watchdog continuity alarm
- Installation manual

(Thermostat sold separately)

Undertile kits are sold at participating retailers, so visit our website [www.warmup.co.nz](http://www.warmup.co.nz) for more information.



## Inslab

CODE	LENGTH*	WATTS
W4500	17.0m	500
W4750	25.0m	750
W41050	35.0m	1050
W41300	43.0m	1300
W41600	53.0m	1600

CODE	LENGTH*	WATTS
W41920	64.0m	1920
W42580	86.0m	2580
W43060	102.0m	3060
W44000	133.0m	4000
W45000	166.0m	5000

\* Length of the inslab heating cable



**5 YEAR**  
WARRANTY  
T's & c's apply

## Thermostats

Choosing the correct thermostat is crucial to ensuring that your heating system works optimally and cost-efficiently. To provide you and your home with an optimum heating experience, Warmup offers a wide range of underfloor heating controllers from simple non-programmable thermostats to the latest, remotely accessible Smart thermostats.

## Our Range

### W3WT01 & W3WT02

Dimensions: 115 (h) x 84 (w) x 40mm (d)

This Colour Touch, programmable thermostat is the latest in the Warmup range allowing users to easily program their heating requirements, thus reducing their energy usage and in turn, their heating bills.

#### Features include:

- Built-in clock/calendar with battery backup
- Includes 4 and 6 event program for automatic comfort and setback temperature.
- Up to 7 different program combinations can be created.
- Energy use – The Energy use function uses data to calculate electricity consumption and the cost of heating over a given period.
- For individual control or heating zone control.

#### The W3WT02 Model with Wi-Fi Technology

- Remote access and control via the user-friendly app.
- Simple set-up with an installation wizard
- The W3WT02 model includes Wi-Fi capability



Also available in black  
Codes: W3WT01 Black and W3WT02 Black

## W3115DT & W3115DT Black



W3115DT



W3115DT Black

Dimensions: 120 (h) x 80 (w) x 37 (d) mm

- Programmable or non-programmable
- 3 control modes - Air, Floor & Air+Floor
- For underfloor heating and heated towel rail control
- Built-in air temperature sensor and external floor temperature sensor
- Floor model with floor sensor connector enables precise control of floor temperature for underfloor heating
- Large backlight LCD features intuitive programming icons
- 2 part design - Removable front face and a switching module
- **Warranty: 3 years** (t's & c's apply)

## W3MTC-1991-WU (Floor sensing) & W3MTC-1999UCH (Air sensing)

Dimensions: 115 (h) x 84 (w) x 50mm (d)

- Remote floor sensor which is designed to meet the standard requirements for comfort, safety and energy saving.
- Locking mechanism behind the control knob to limit the amount of adjustment possible.
- The perfect solution for budget-conscious users.



Full technical specifications can be found on our website [www.warmup.co.nz](http://www.warmup.co.nz)



## Tiled Shower Solutions

**15** YEAR WARRANTY

T's & C's apply

Whether you are looking to revamp your bathroom or be bold and create a wet room design, the biggest task is ensuring everything is waterproof and sealed correctly to avoid any damages in future. The next step in luxury and comfort would be to add undertile heating to the bathroom, which will not only keep your feet warm, but will assist in drying the floor faster.

Using the very latest in technology and modern building products, Warmup offers the first completely waterproof and integrated wet room design, where all its components and installation are 100% warranted.

### Features include:

- Designed and installed solution
- Limitless design possibilities
- Durable construction using premium quality products
- Independently tested waterproofing system
- 100% waterproof
- 15-year warranty
- Backed by an established New Zealand company
- BRANZ appraised system
- 316 grade stainless steel drains

\*Terms and conditions apply



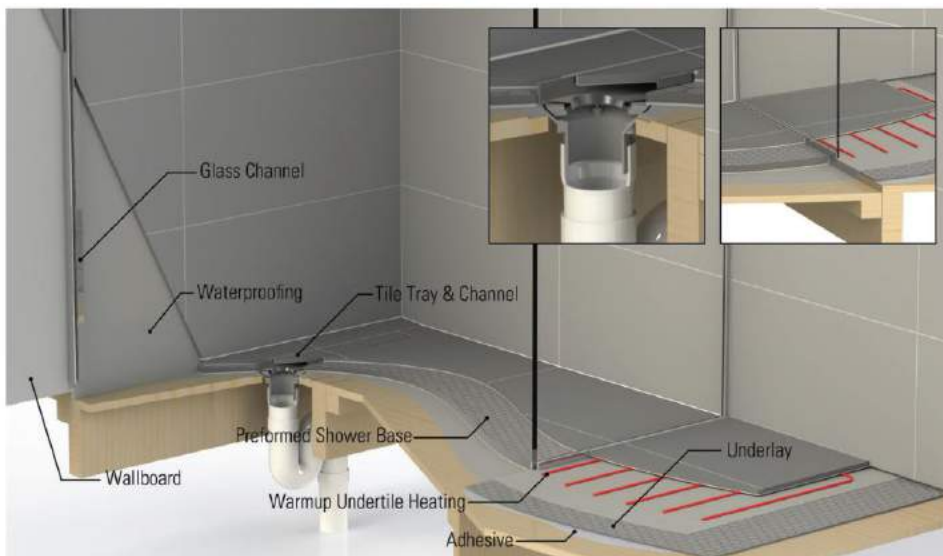
# Technical Features

- Weldable sheet membrane waterproofing incorporating damp waste
- Level entry or low profile thresholds
- Traditional centre and off centre wastes as well as a full range of increasingly popular channel linear drains
- System is suitable for concrete or timber floors
- Glass incorporated: Full range of 10mm frameless - standard sizes for economy or custom fitted for perfection
- BRANZ appraised, individually as components and jointly as a system
- Designed with ALL Associated trades in mind
- Full architectural specifications available

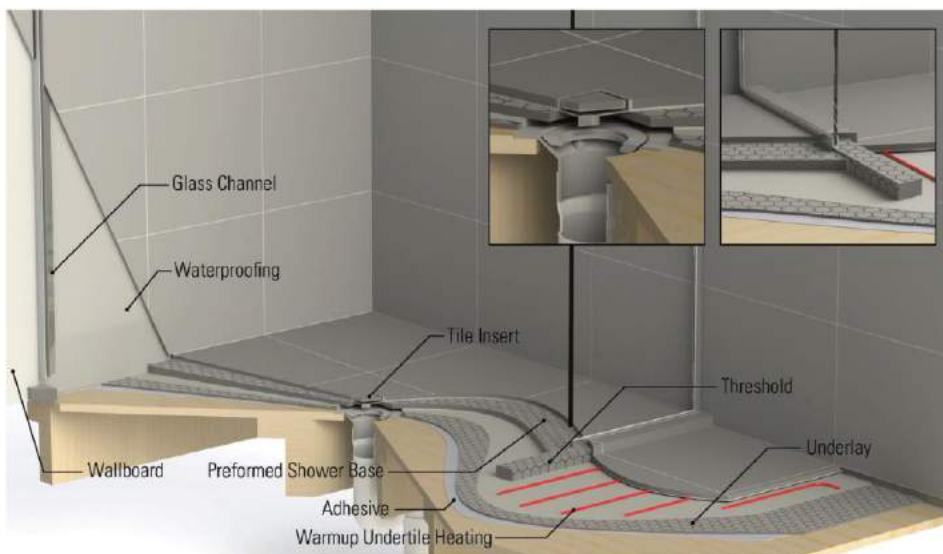
## Other Features Include

- Undertile heating
- Incorporation of appropriate underlay (insulating, acoustic, strengthening)
- Consistent shower falls specific to waste type
- Pre-channeling for glass (before tiling) confining water within the immediate shower boundaries
- Extensive range of decorative channel and square waste options

### Warmup Level Entry + Channel Drain



### Warmup Hob + Centre Drain





## Insulation Boards by **marmox**

SUSTAINABLE BUILDING PRODUCTS

**20** YEAR WARRANTY  
t's & c's apply

40% of underfloor heating gets lost through concrete floors.

No underfloor heating is complete or effective without proper insulation to assist with both the waterproofing requirements as well as directing the heat flow. This ultimately makes a big difference in reducing your power bill. We trust Marmox Insulation boards to do just that.

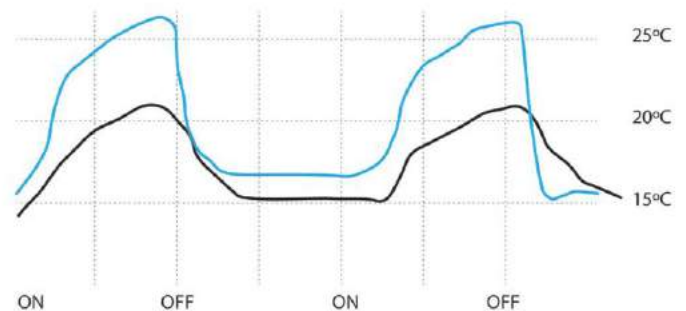
After switching on your heating, your floor tiles will warm up in about 15-20 minutes, even on a cold concrete floor. On a wooden floor, it has a 2-degree increase every 10 minutes from start-up.

## Features

- Energy saving / energy efficient
- Acts as a thermal barrier and significantly reduces heat loss to the substrate
- Easy to work with and install into new and existing building projects
- Removes the need for tile and slate underlay, provided the sub-floor is structurally sound and flat
- Completely water resistant and will not absorb moisture, making it ideal for bathrooms and wetrooms
- Acts as an excellent acoustic barrier when used upstairs
- Reduces footfall noise on concrete floors

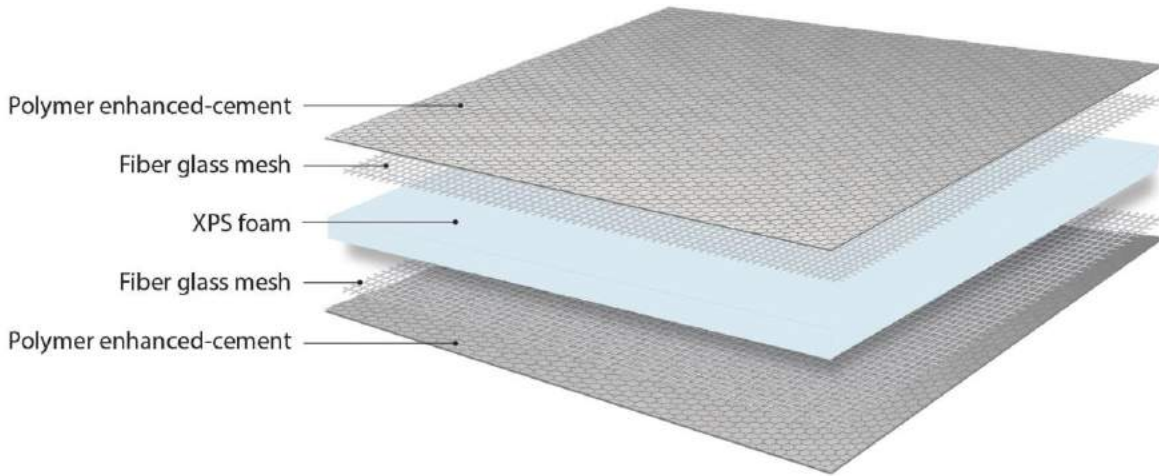
### The benefits of using **Marmox** in your home

Heating on / off





# Technical Information



Recent changes to the NZ Building Code require heated floors in new homes to be insulated and in most cases, Marmox exceeds this requirement.

To calculate the thickness of Marmox multi-board (required to meet the new regulations in your new home):

- Divide the area of the heated floor by the perimeter length (of the exterior walls in the room).
- If the calculated result is greater than 1.6, then 6mm Marmox multi-board is sufficient.
- If the calculated result is between 1.3 and 1.6, then 10mm Marmox multi-board will meet the requirement.

## Technical Properties

Density	36kg/m <sup>3</sup>
Thermal Conductivity	0.027 watt/mK
Thermal Conductivity	(5 years) 0.032 watt/mK
Comprehensive Strength	3.0 kg.cm <sup>2</sup> (300kN/m <sup>2</sup> )
Water Absorption (Immersion)	0.2% by vol
Water Absorption (Capillary)	Nil
Coefficient of Linear Expansion	30 x 10.6
Flammability	B1 Class '0'

## Board Sizes

PRODUCT CODE	DESCRIPTION	DIMENSIONS (mm)
MCB6	6mm Insulation Board	1250 x 600 x 6
MCB10	10mm Insulation Board	1250 x 600 x 10
MCB20	20mm Insulation Board	1250 x 600 x 20

Insulation boards of thicknesses 30mm and 50mm are also available but have longer lead times.

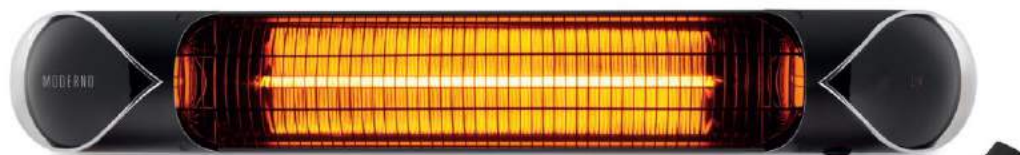


## Outdoor Heating by **tranquility** bathroomware

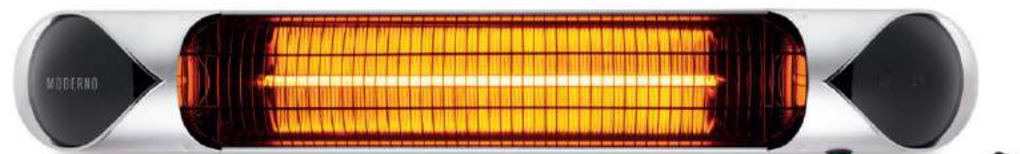
**2**  
YEAR  
WARRANTY  
T's & C's apply

### Moderno carbon infrared heaters

Elegant, modern and easy to control, Moderno heaters are ideally suited for Alfresco dining and outside areas like cafes, restaurants and bars. They function well in buildings with elevated ceilings, eg schools, churches and community centres.



Moderno heater BLACK  
900W x 130H x 89.5D mm ODHMONBLK



Moderno heater SILVER  
900W x 130H x 89.5D mm ODHMONSIL

### Features

Provides extremely efficient directional heat within seconds | Compact design - looks great mounted horizontally or vertically | 80% more efficient compared to traditional heating systems, thus reducing your running costs drastically | Indoor / outdoor application | Odour and CO2 emission free | Can be hardwired or plugged in

Periscopic remote control - can be controlled from a long distance and wide course

Designed for both commercial and residential usage | Automatic temperature control regulates power consumption based on your set temperature and eliminates annoying hot and cold cycles

Optional: Telescopic stand

# Moderno<sup>mini</sup> carbon infrared heater

The Moderno mini carbon infrared heater with an output of 1200W, seamlessly blends in with its elegant surroundings and is ideal for smaller indoor/outdoor spaces including bathrooms.



Moderno<sup>mini</sup> BLACK  
700W x 130H x 89.5D mm MOD-1200B



Moderno<sup>mini</sup> SILVER  
700W x 130H x 89.5D mm MOD-1200S

Optional: Telescopic stand for both heaters  
Adjustable stand with a polished chrome finish  
Round base diameter: 400mm  
Height adjustable: 1140 - 2050mm  
Code: STAND



## Sizing Guide

CODE	DESCRIPTION	WATTS	DIMENSIONS (w x h x d)
ODHMONBLK	MODERNO BLACK	2000	900 x 130 x 89.5 mm
ODHMONSIL	MODERNO SILVER	2000	900 x 130 x 89.5 mm
MOD-1200B	MODERNO MINI BLACK	1200	700 x 130 x 89.5 mm
MOD-1200S	MODERNO MINI SILVER	1200	700 x 130 x 89.5 mm

## Affiliations & Accreditations

We are proud to be affiliated with or accredited by these brands.



Warmup has heating experts and contractors nationwide, who will be pleased to provide more details on Warmup's products and services. To contact your local Warmup distributor or to arrange a free, no-obligation quotation, please call

New Zealand: 0800 WARMUP (927 687) / Australia: 1300 138 126

**warmup**<sup>®</sup>  
Est. 1994

Underfloor heating | Tiled shower solutions

[www.warmup.co.nz](http://www.warmup.co.nz)  
0800 WARMUP (927 687)