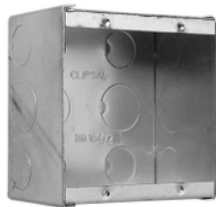


**Product data sheet**  
**Characteristics**

**164/2**  
**WALL BOX DEEP 2 GANG SINGLE HEIGHT**



**Main**

Range of product	Series 164
Product brand	Clipsal


**Complementary**

Shape	Square
Number of gangs	2 gangs
Cable entry number	16
Material	Steel
Surface treatment	Electro-galvanized
Length	97 mm
Width	96 mm
Depth	58 mm
Location of connection	Rear

**Packing Units**

Package 1 Weight	0.308 kg
------------------	----------

**Offer Sustainability**

Sustainable offer status	Green Premium product
REACH Regulation	 <a href="#">REACH Declaration</a>
REACH free of SVHC	Yes
EU RoHS Directive	Pro-active compliance (Product out of EU RoHS legal scope)  <a href="#">EU RoHS Declaration</a>
Toxic heavy metal free	Yes
Mercury free	Yes
RoHS exemption information	 <a href="#">Yes</a>
China RoHS Regulation	 <a href="#">China RoHS Declaration</a>
Environmental Disclosure	 <a href="#">Product Environmental Profile</a>

The information provided in this documentation contains general descriptions and/or technical characteristics of the performance of the products contained herein. This documentation is not intended as a substitute for and is not to be used for determining suitability or reliability of these products for specific user applications. It is the duty of any such user or integrator to perform the appropriate and complete risk analysis, evaluation and testing of the products with respect to the relevant specific application or use thereof. Neither Schneider Electric Industries SAS nor any of its affiliates or subsidiaries shall be responsible or liable for misuse of the information contained herein.